

# Air Plus Software

## Air Plus

Met One Instruments Air Plus Software for Windows® is a complete package for the collection, display, and reporting of particulate and meteorological data. Air Plus provides an easy to use interface for manual and automatic collection of data and report generation. Use with the Met One Instruments, AutoMet Logger, E-Sampler, E-Bam and the BAM-1020.

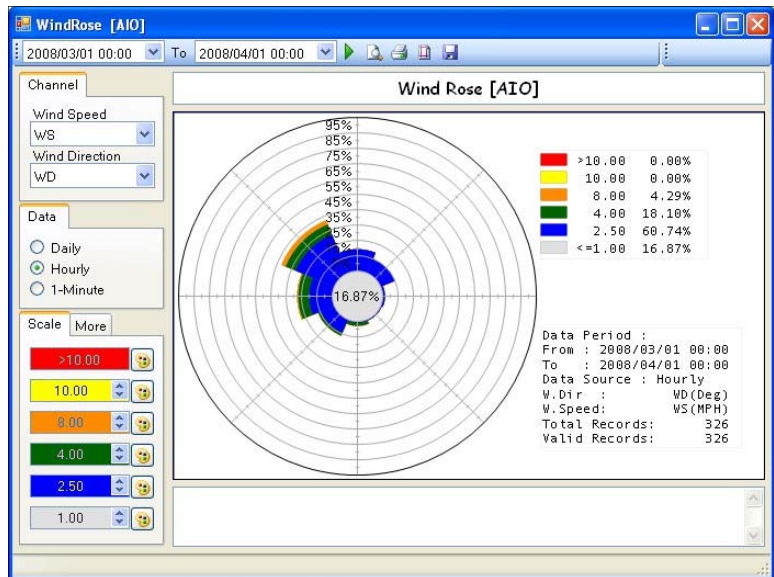
### Features:

- Windows® Graphic Interface
- Charts, Graphs and Reports
- Wind Rose Charts
- Auto-Polling of stations
- Works with XP and VISTA
- SQL Database
- IP Capable Polling

Air Plus provides for automatic data collection at specific times or selected intervals from multiple local and remote stations.

Data from each device is stored in an SQL Data Base for easy access by other programs that are SQL compatible, or for direct display of the data base on a web page using simple API and scripting language. Various reports, charts, and graphs can be generated by the program using the collected data. The data can be printed directly or exported in common data formats.

Installation is simple, for particulate equipment and with the AutoMet 466A Logger a copy of the .INI file on a CD



Wind Rose Screen from Air Plus

#	Name	DataType	Unit	FullVoltage	Multiplier	OffSet	Visible	Precision
1	WS	SCALAR	m/s	2.5	60	0	<input checked="" type="checkbox"/>	1
2	WD	VECTOR	Deg	2.5	360	0	<input checked="" type="checkbox"/>	0
3	AT	SCALAR	C	2.5	80	-30	<input checked="" type="checkbox"/>	1
4	RH	SCALAR	%	2.5	100	0	<input checked="" type="checkbox"/>	0
5	BP	SCALAR	mb	2.5	406.4	677.3	<input checked="" type="checkbox"/>	1
6	WS2	SCALAR	m/s	1	50	0	<input type="checkbox"/>	1
7	WD2	VECTOR	Deg	2.5	360	0	<input type="checkbox"/>	1
8	AT2	SCALAR	F	1	1	0	<input type="checkbox"/>	3
9	RN	TOTAL	IN	0	0.01	0	<input type="checkbox"/>	2
10	SIGMA	SCALAR	Deg	2.5	120	0	<input checked="" type="checkbox"/>	1
11	Spare1	SCALAR	None	2.5	4095	0	<input type="checkbox"/>	0
12	Spare2	SCALAR	None	2.5	4095	0	<input type="checkbox"/>	0

Station Definition Table from Air Plus

which is used to correctly configure the Air Plus Software. You simply import the correct .INI file for your system, enter the date and time and your ready to begin data collection.

If your upgrading an existing station from MicroMet Plus Software, a software setting in

the setup files will allow you to import any previous system into the new Air Plus Software Data Base.

### Platform Compatibility

Air Plus Software works with Windows® XP, and Vista, and is expected to be compatible with the new Windows® Seven Software..

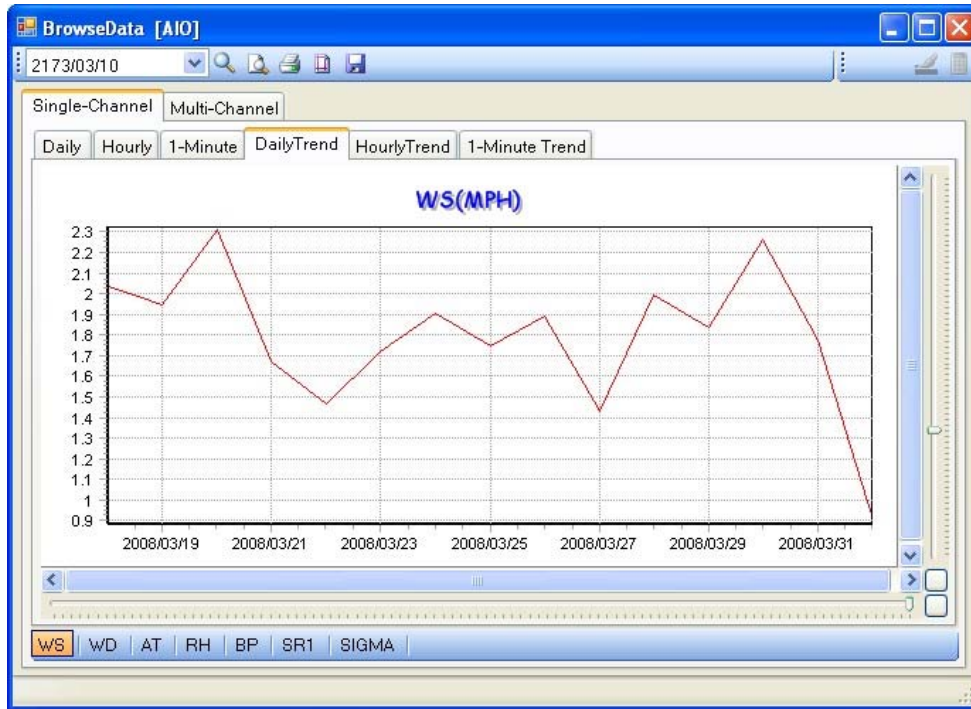


## Met One Instruments, Inc.

Corporate Sales & Service: 1600 Washington Blvd., Grants Pass, OR 97526. Phone (541) 471-7111, Fax (541) 471-7116  
 Distribution & Service: 3206 Main Street, Suite 106, Rowlett, TX 75088, Phone (972) 412-4747, Fax (972) 412-4716  
<http://www.metone.com>

# Air Plus Software

---



Single Channel Chart Display from Air Plus Software



Multiple Channel Chart Display from Air Plus Software